

NEW
SRESKY

S
R
E
S
K
Y



SRESKY
SINCE 2004

THERMOS 2

SOLAR STREET LIGHT
WITH AUTO-CLEANING
FUNCTION



INTRODUCTION

Product specifications

01 FRONT COVER

02 CATALOG

03 MAIN
ADVANTAGES

04 MAIN
ADVANTAGES

05 SPECIFICATIONS

06 EXPLODED VIEW

07 EXPLODED
VIEW OF
BATTERY PACK

08 OPTICAL
FIGURE

09 DIMENTION
FIGURE

10 LIGHT POLE
DIAGRAM

11 MORE DETAILS

12 CORE
TECHNOLOGY

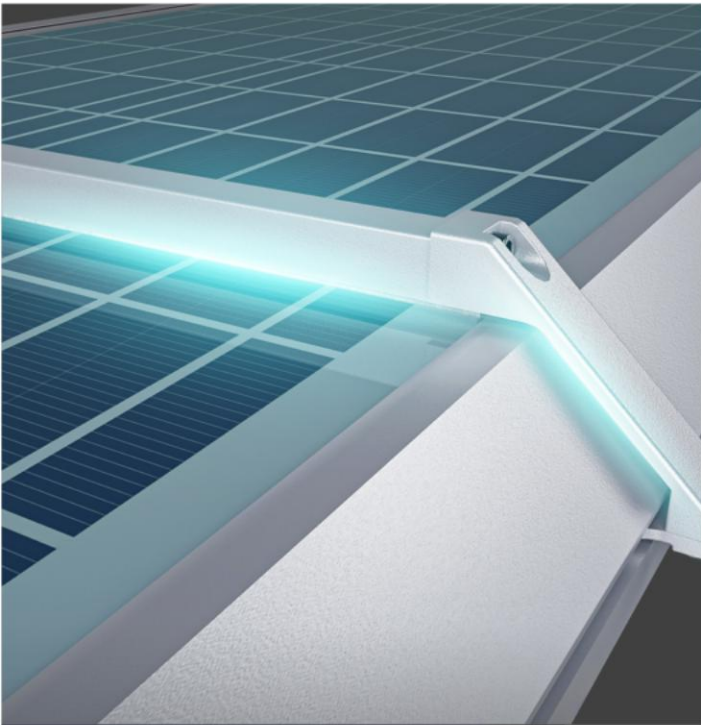
13 INSTALLATION
INSTRUCTIONS

14 PACKAGE
DETAIL

15 APPLICATION

Product Advantage

SOLAR STREET LIGHT WITH AUTO-CLEANING FUNCTION
Works in environmental temperature up to 60°C



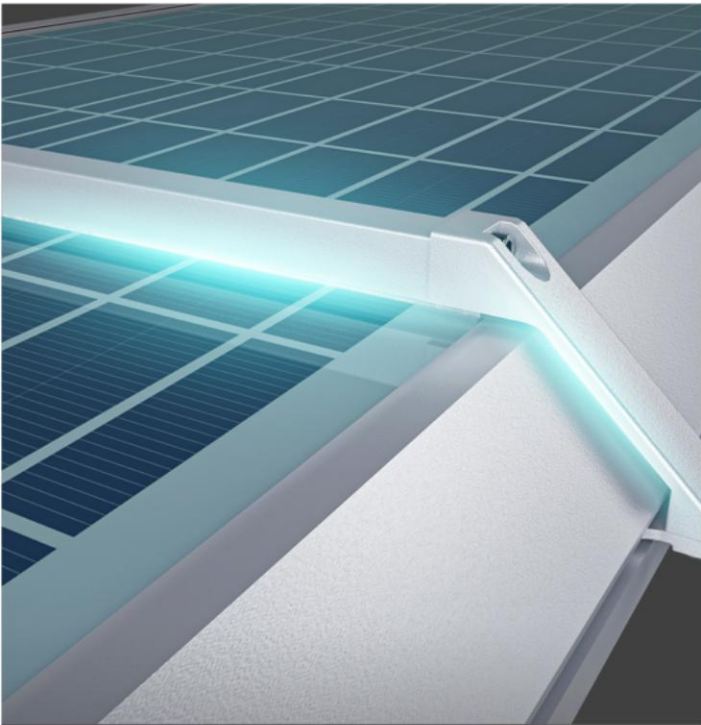
AUTOMATIC HEATING FUNCTION

Built-in heating system ensures the lamp working well in extreme cold area.



Product Advantage

SOLAR STREET LIGHT WITH AUTO-CLEANING FUNCTION
Works in environmental temperature up to 60°C



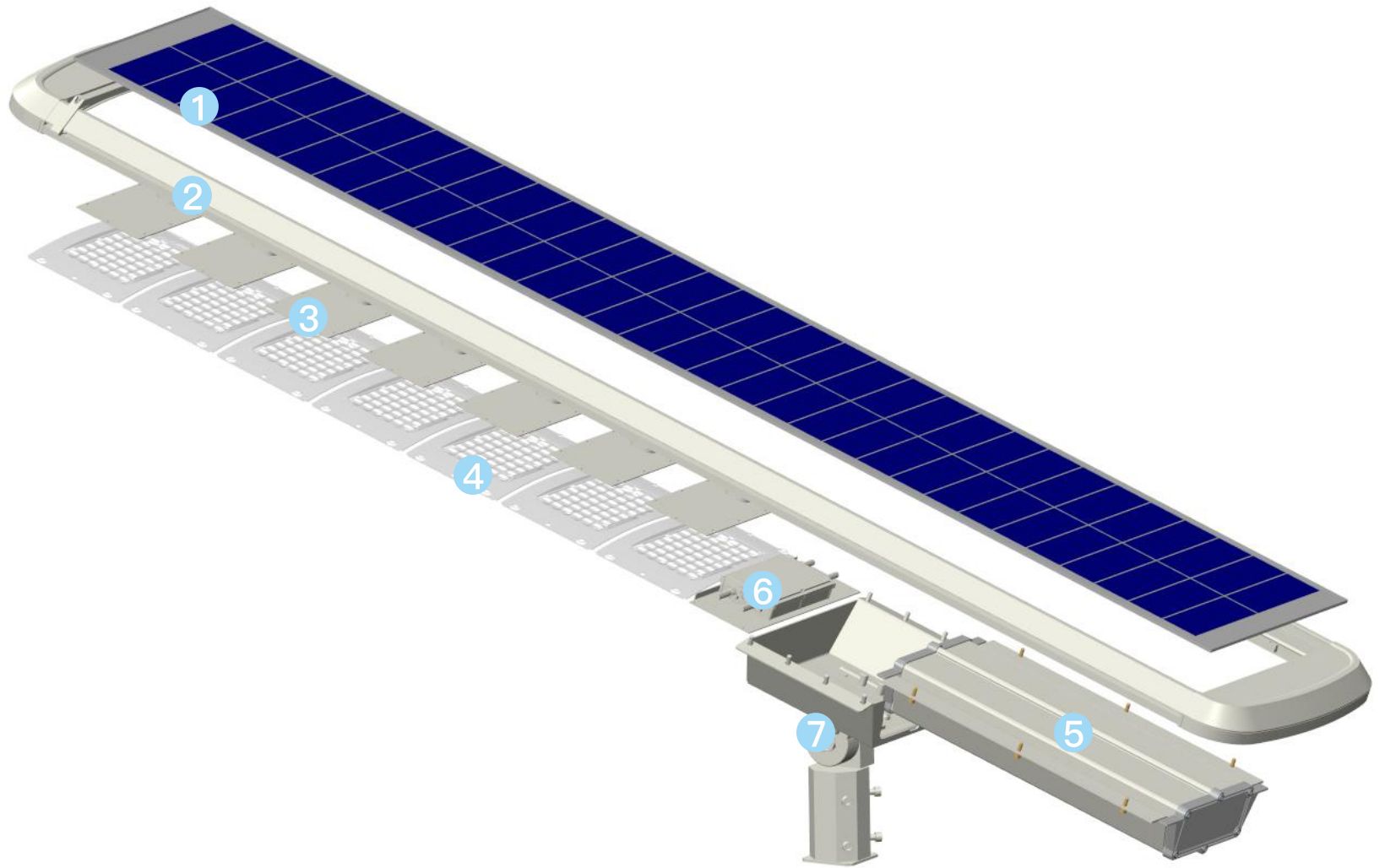
HIGH-TEMPERATURE PROTECTION

Battery Lifespan in high temperature area is longer as one feature will prevent battery still being charged at abnormal Hot environment.



SOLAR LIGHT I SPECIFICATIONS

Item : THERMOS 2	SSL-72	SSL-73	SSL-74	SSL-75	SSL-76
Fixture Power	40W	60W	80W	100W	120W
Solar panel					
Power	35.7W	47.5W	61.4W	78.8W	95W
Li-ion battery					
Capacity	14.8V 269.36WH 2.6AH/PCS	14.8V 384.8WH 2.6AH/PCS	14.8V 538.72WH 2.6AH/PCS	14.8V 654.16WH 2.6AH/PCS	14.8V 769.6WH 2.6AH/PCS
Charging/Discharging Temp	-20~45°C/-20~60°C				
Charging Time	8H	9H	9H	10H	9H
LED (OSRAM)	3030 / 96pcs	3030 / 144pcs	3030 / 192pcs	3030 / 240pcs	3030 / 336pcs
Color Temp	4000K , Ra 70+	4000K , Ra 70+	4000K , Ra 70+	4000K , Ra 70+	4000K , Ra 70+
Efficiency	190lm/W	190lm/W	190lm/W	190lm/W	190lm/W
Performance					
Lighting Time in Rainyday	>10 Days				
Control Mode	Button Switch , ON/OFF Long Press 1.5s				
Lighting Mode	100% (5H) +20% Till dawn				
Mode Indication	-				
Capacity Indication	4LEDs : >80% ; 3LEDs : 60%~80% ; 2LEDs : 30%~60% ; 1LEDs : <30% ; The 1st LED flashes quickly : Low power				
FAS	YES				
PIR	120° , >5m , Activated by customer 's need				
Core technology	ALS 2.3 / TCS1.0 / FAS 1.0 / AUTO-CLEANING				
Solar Panel Autoclean	YES				
IP/IK Class	IP65 / IK10				
Install Height / Distance	4m / 18m	6m / 27m	8m / 36m	10m / 45m	12m / 54m



Solar Panel



Product Shell



Led Plate



Optical Lens



Battery Pack

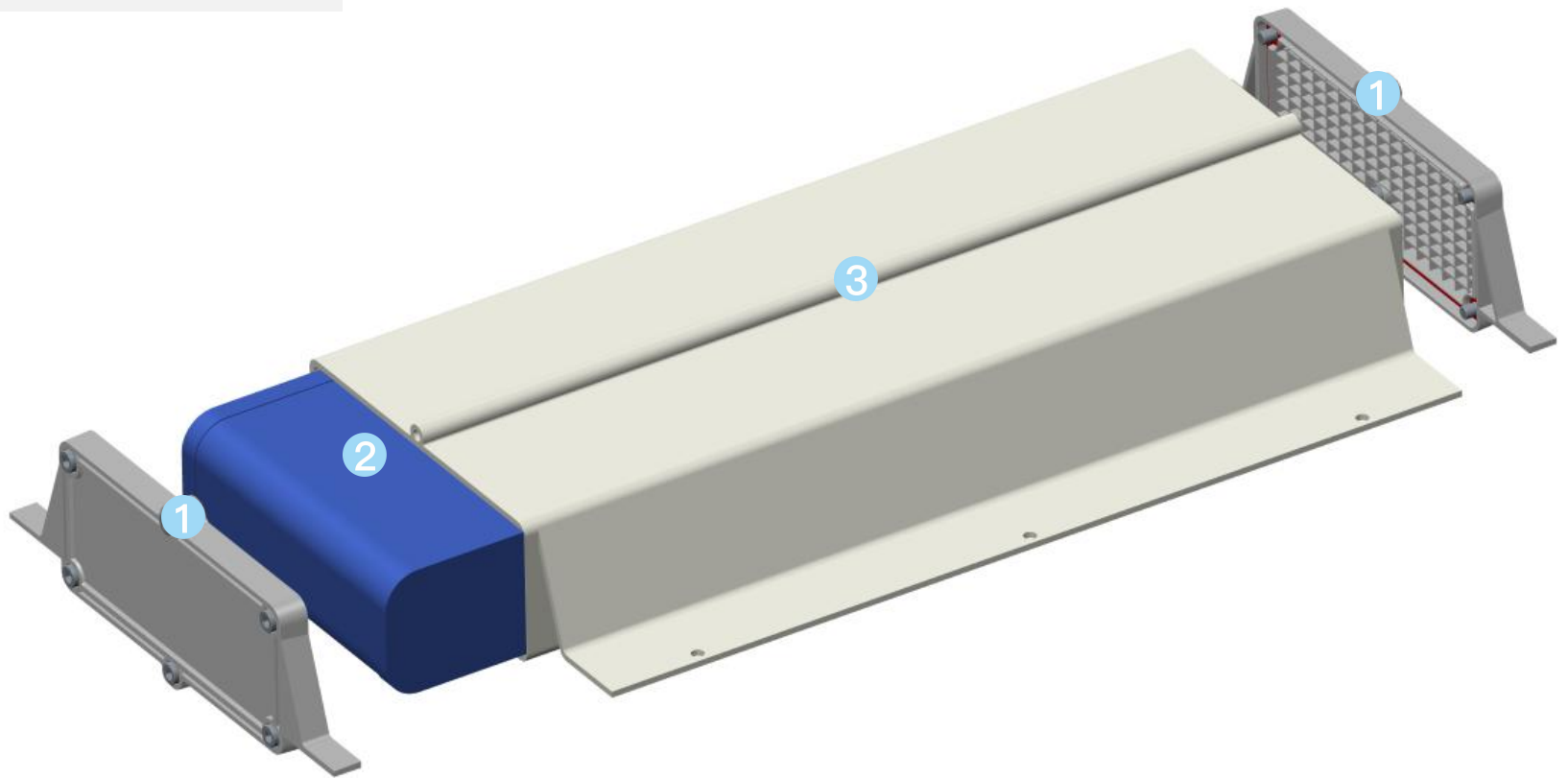


Control Module



Bracket

TCS 1.0 Inside :
Ensures battery pack
longer lifespan while
working in extreme
high/low temperature area



Shell



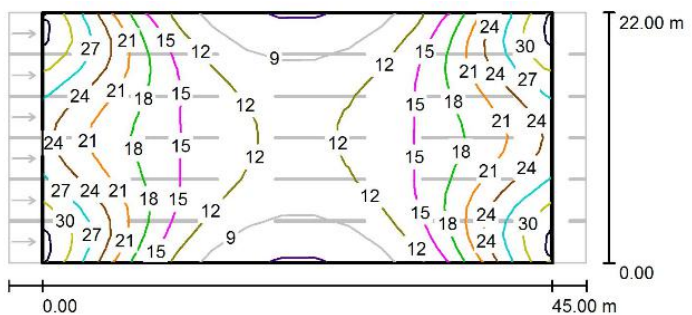
Li-ion Battery Pack



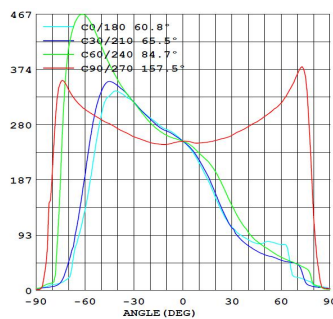
Case

SSL-72/73/74/75/76

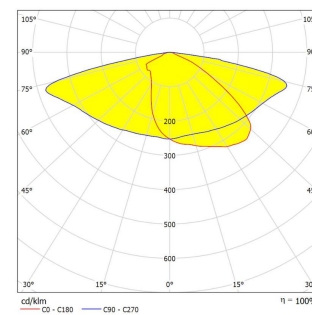
Road Simulated Diagram



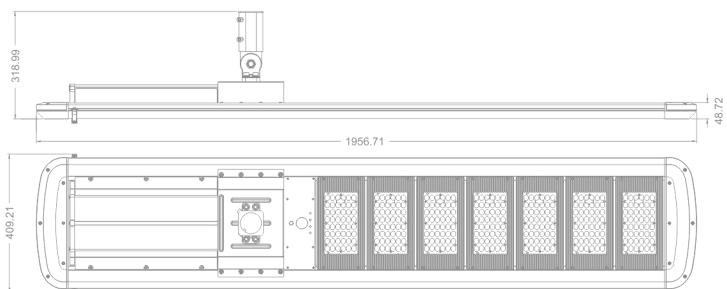
Illumination Curve



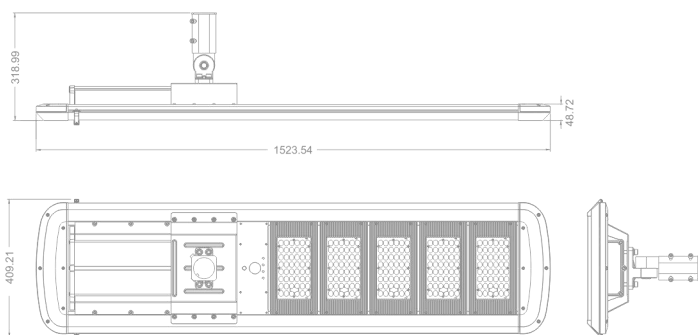
Luminance Distribution



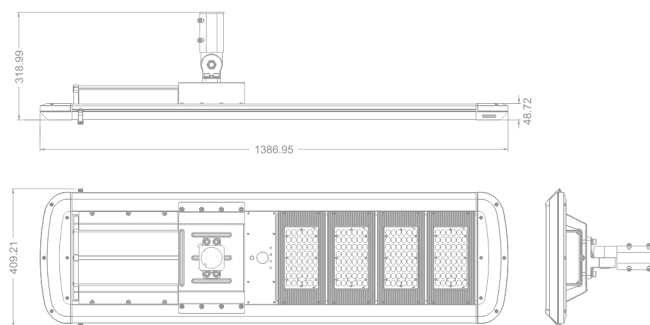
SOLAR LIGHT | DIMENSION FIGURE



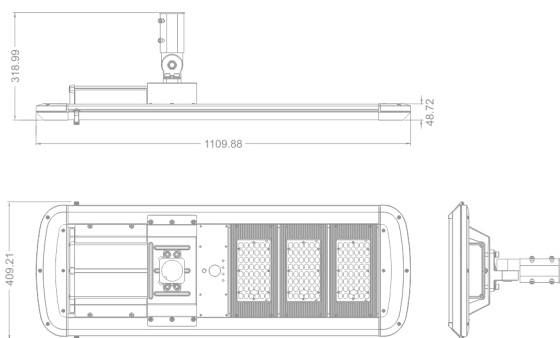
SSL-76



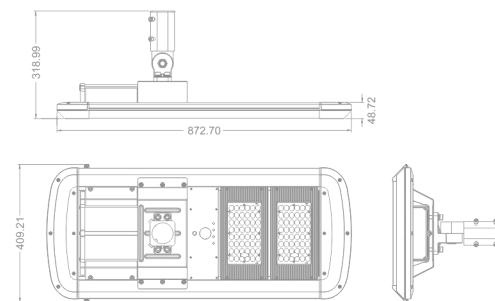
SSL-75



SSL-74



SSL-73



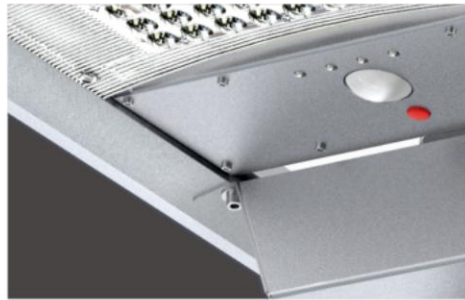
SSL-72



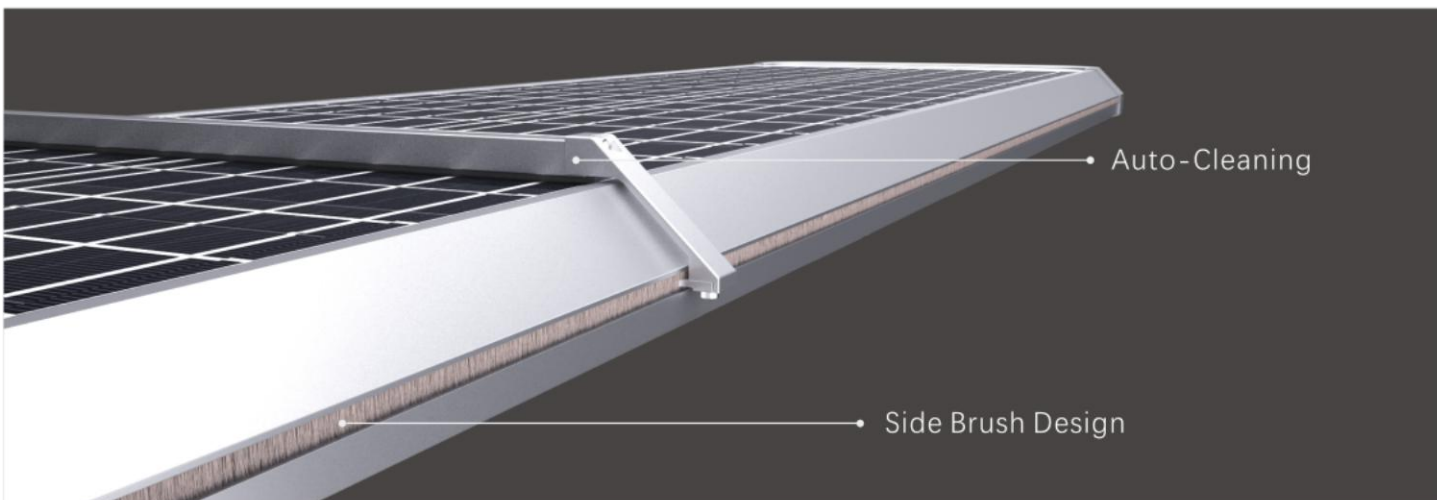
High Lumen LEDs
190lm/W



LED Indicator for All Status



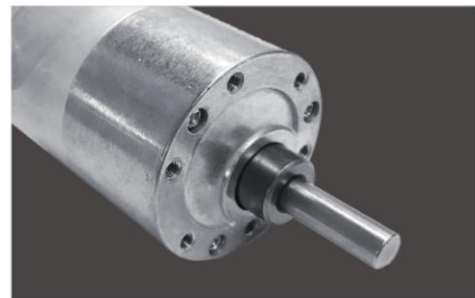
Bracket
Adjustable Angle Bracket (0° - 180°)



Battery Pack
Easy to Maintain



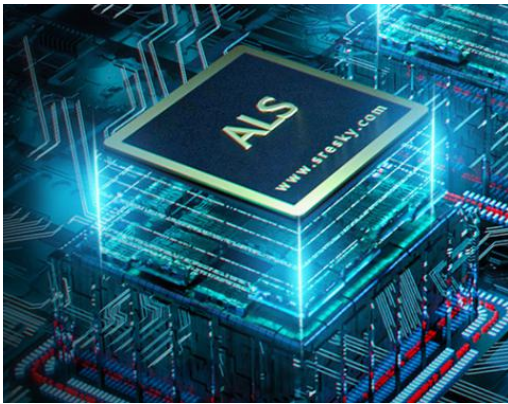
Monocrystalline
Solar Charging Efficiency :>21%



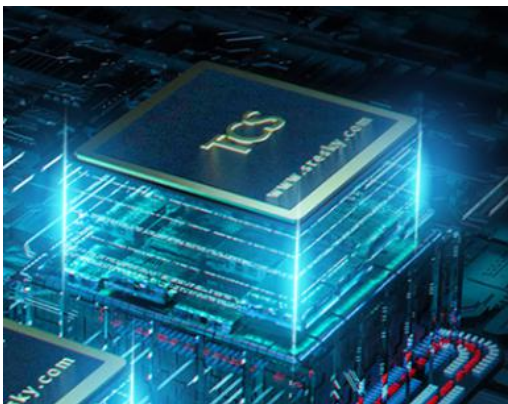
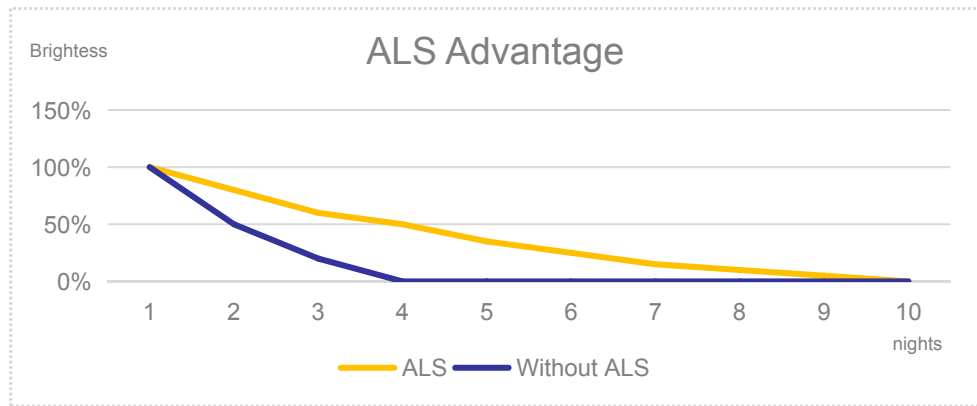
Volatility Resistance in High TEMP
Antifreezing in Low TEMP



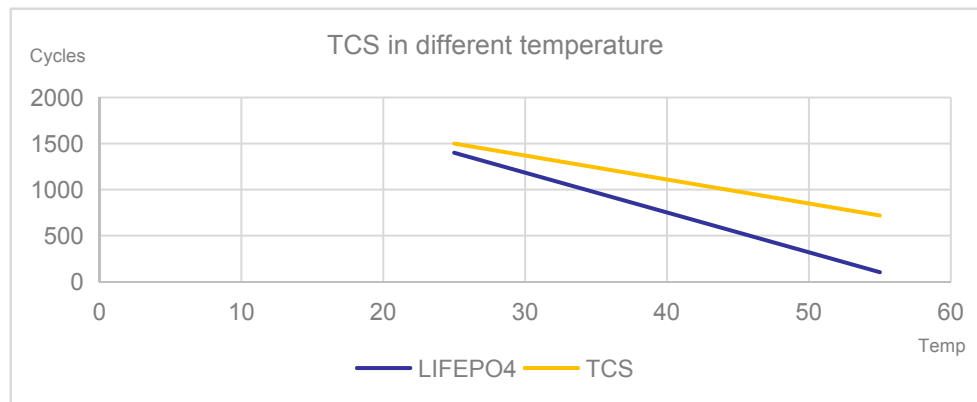
A Great Company should always pay the highest attention to the every detail design , and the craftsmanship spirit should be filled in the whole design process and mass production.



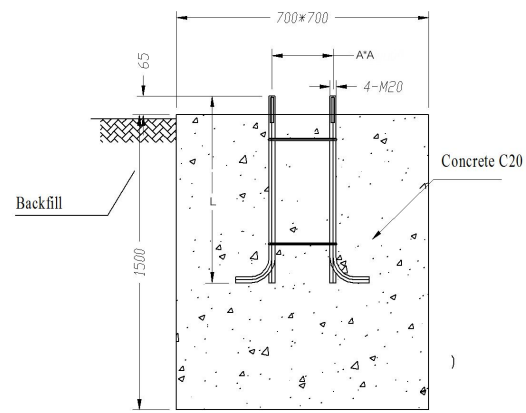
ADVANTAGE OF ALS



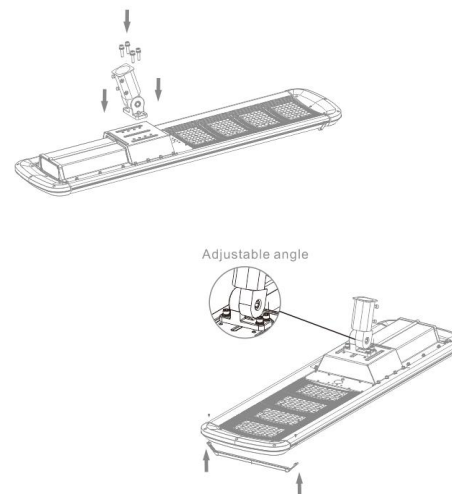
ADVANTAGE OF TCS



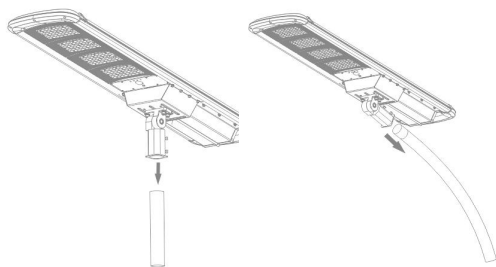
- 1 Dig a hole according to the size of the foundation cage, put the foundation cage into the hole and fix it with concrete C20.



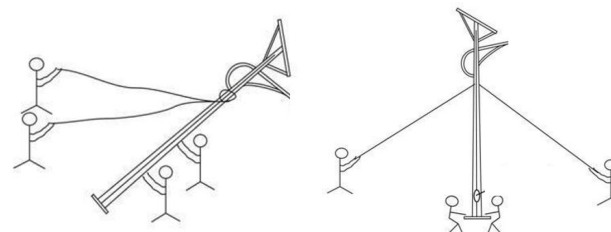
- 2 Use the supplied screws to fix the bracket on the lamp.

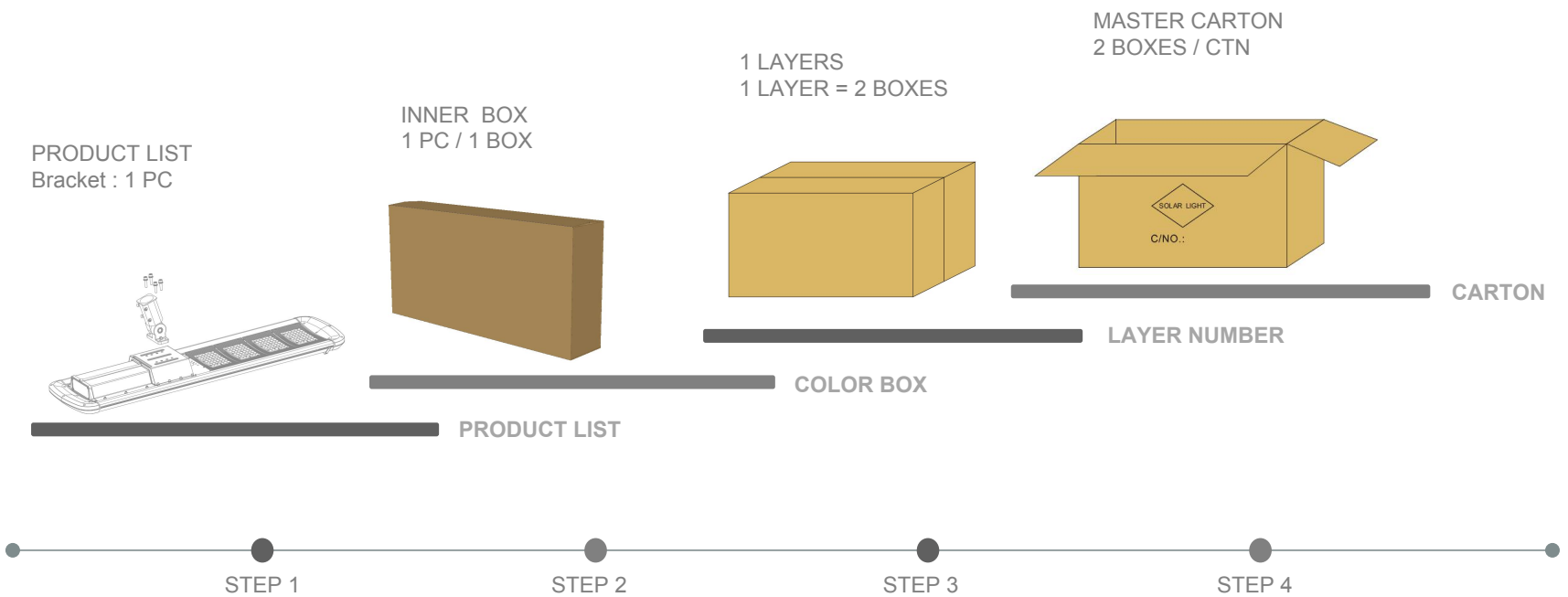


- 3 Use the supplied screws to fix the lamp on the pole.



- 4 Lift the lamp pole by the person or machine, align the bottom flange of the lamp pole with the foundation cage, and then fix the lamp pole with screws.





MODEL NO.	PCS/CTN	QTY(PCS)	CTN QTY	CARTON SIZE(CM)	N.W.(KG)	G.W.(KG)
SSL-72	2	2	1	106*43*53.3	22.4	30.2
SSL-73	2	2	1	126.8*43*53.3	27	35.2
SSL-74	2	2	1	155.5*42.3*53.5	34	43.34
SSL-75	2	2	1	169*43*53.5	37.2	47.7
SSL-76	2	2	1	211.3*43*53.3	45.3	57.4
SSL-72/73/74/75/76 Bracket	8	8	1	47.7*38*16.6	9	11.34

Net weight and gross weight are for reference only

S / O / L / A / R / L / I / G / H / T

THANKS
VERY
MUCH